



Key User Training Document

PC303 - Actual Costing

28 / 12 / 2021

Version: 1.0

Author: Panatda Prajuabdee

Course Information

AROUND



Course ID	PC303
Course Description	Actual Costing
Course Duration	3 hrs.
Course Pre-requisite	PC201, PC202, PC301, PC302
Course Objective	<ul style="list-style-type: none">• Understand how actual costing calculation from ML function

Course Information

AROUND



Table of Content (สารบัญ)

- Actual Costing Run

Output (ผลที่คาดว่าจะได้รับ)

Able to execute actual costing period-end closing steps and verify the correctness.

Course Outline

AROUND



Course Overview

Actual Costing Run

Q&A

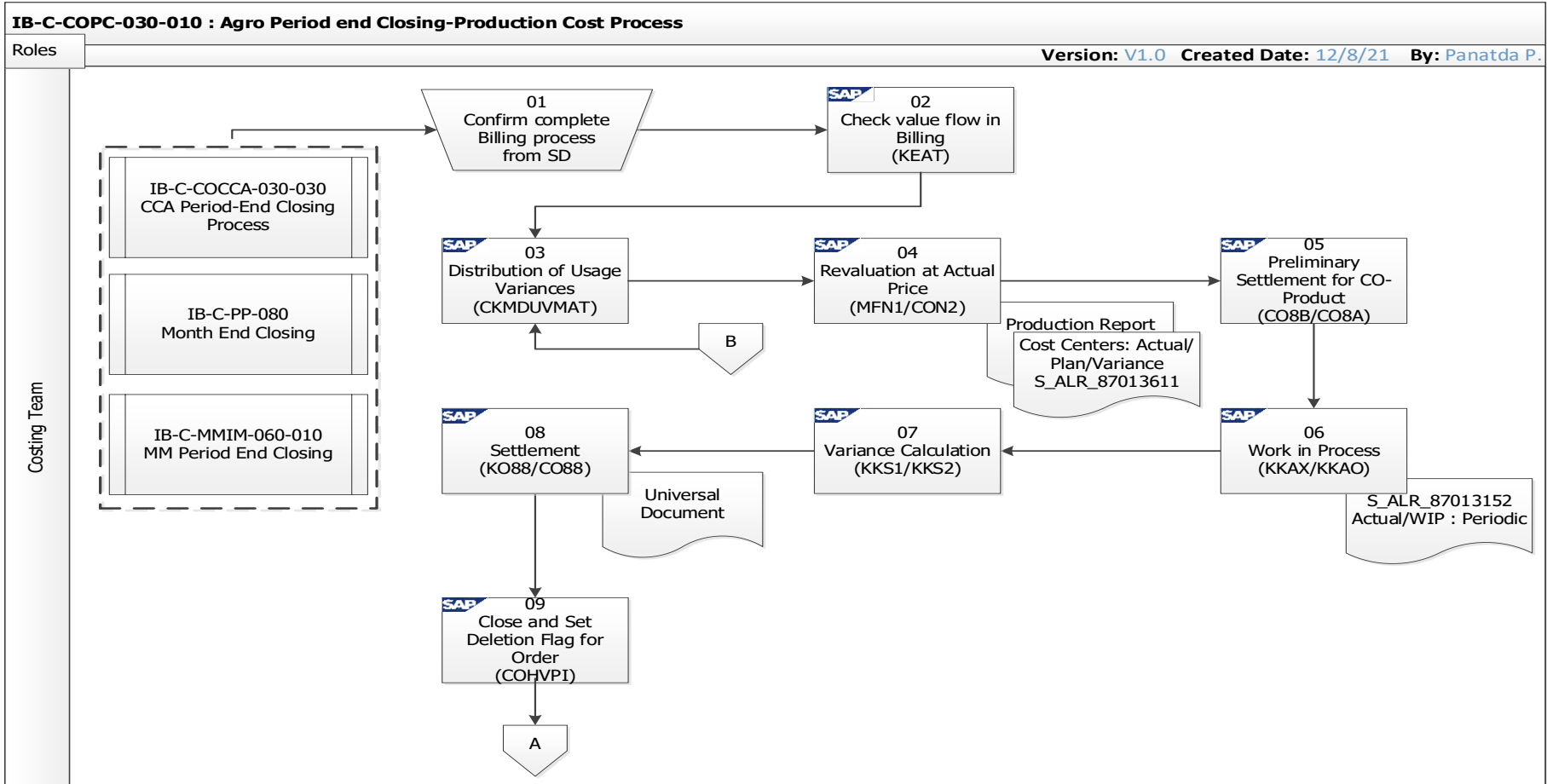
Course Overview

IB-C-COPC-030-010 Agro Product Costing Period-End Closing (1/2)

AROUND



SAP Implementation Project Module: Controlling



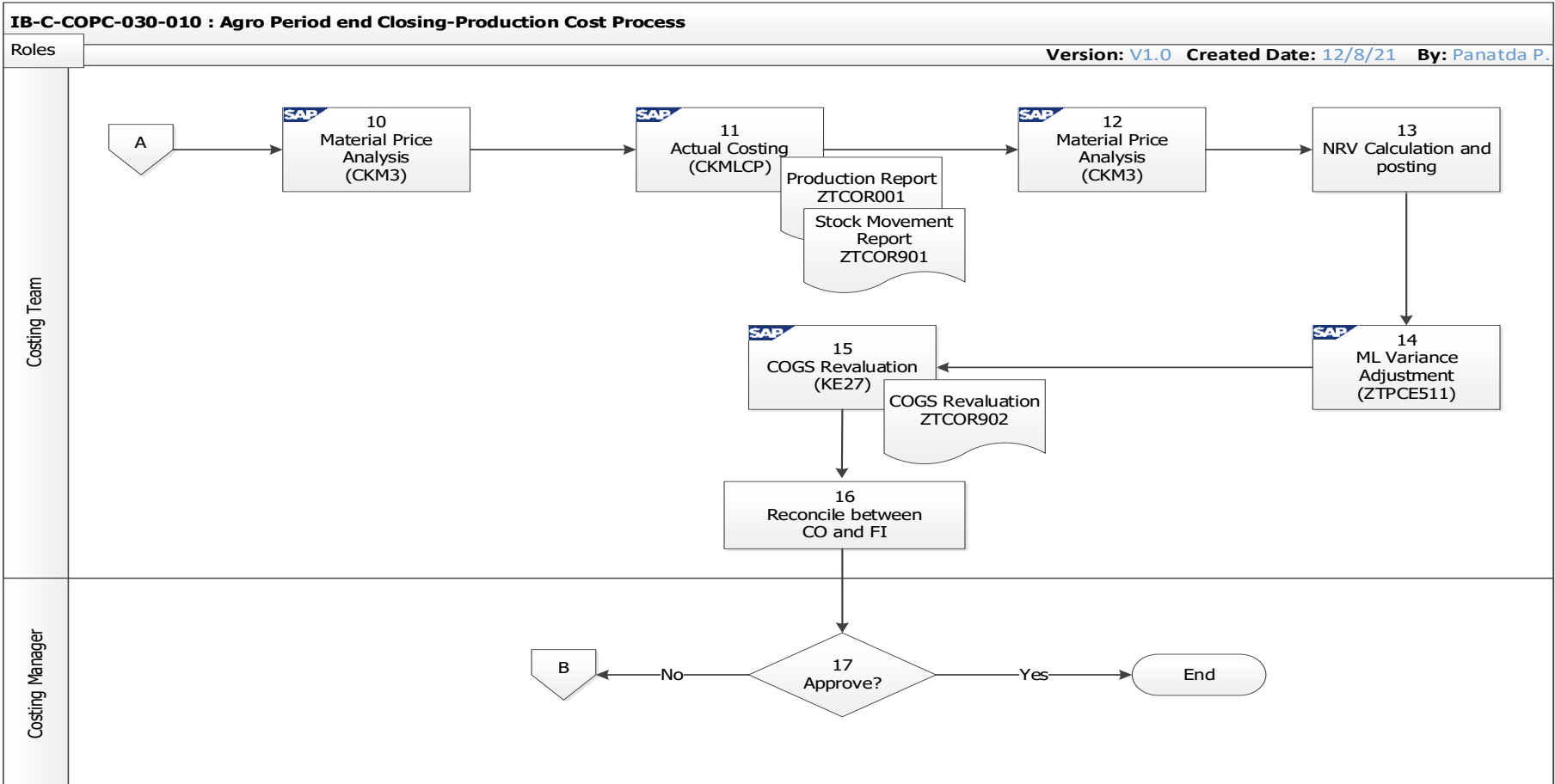
Course Overview

IB-C-COPC-030-010 Agro Product Costing Period-End Closing (2/2)

AROUND



SAP Implementation Project Module: Controlling



Course Overview

IB-C-COPC-030-020 Food Product Costing Period-End Closing

AROUND

(1/2)



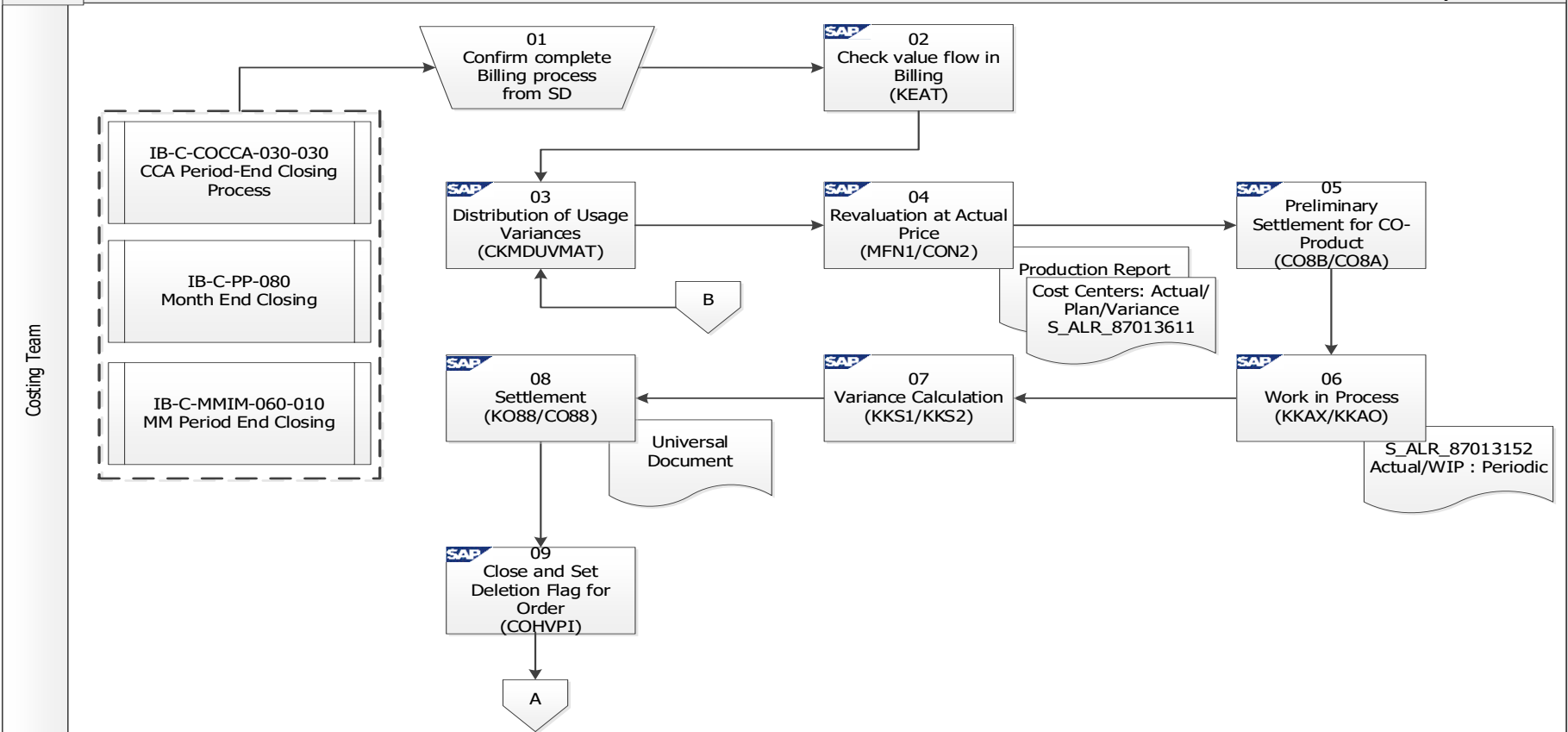
SAP Implementation Project Module: Controlling



IB-L-COPC-030-020 : Food Period end Closing-Production Cost Process

Roles

Version: V1.0 Created Date: 12/8/21 By: Panatda P.

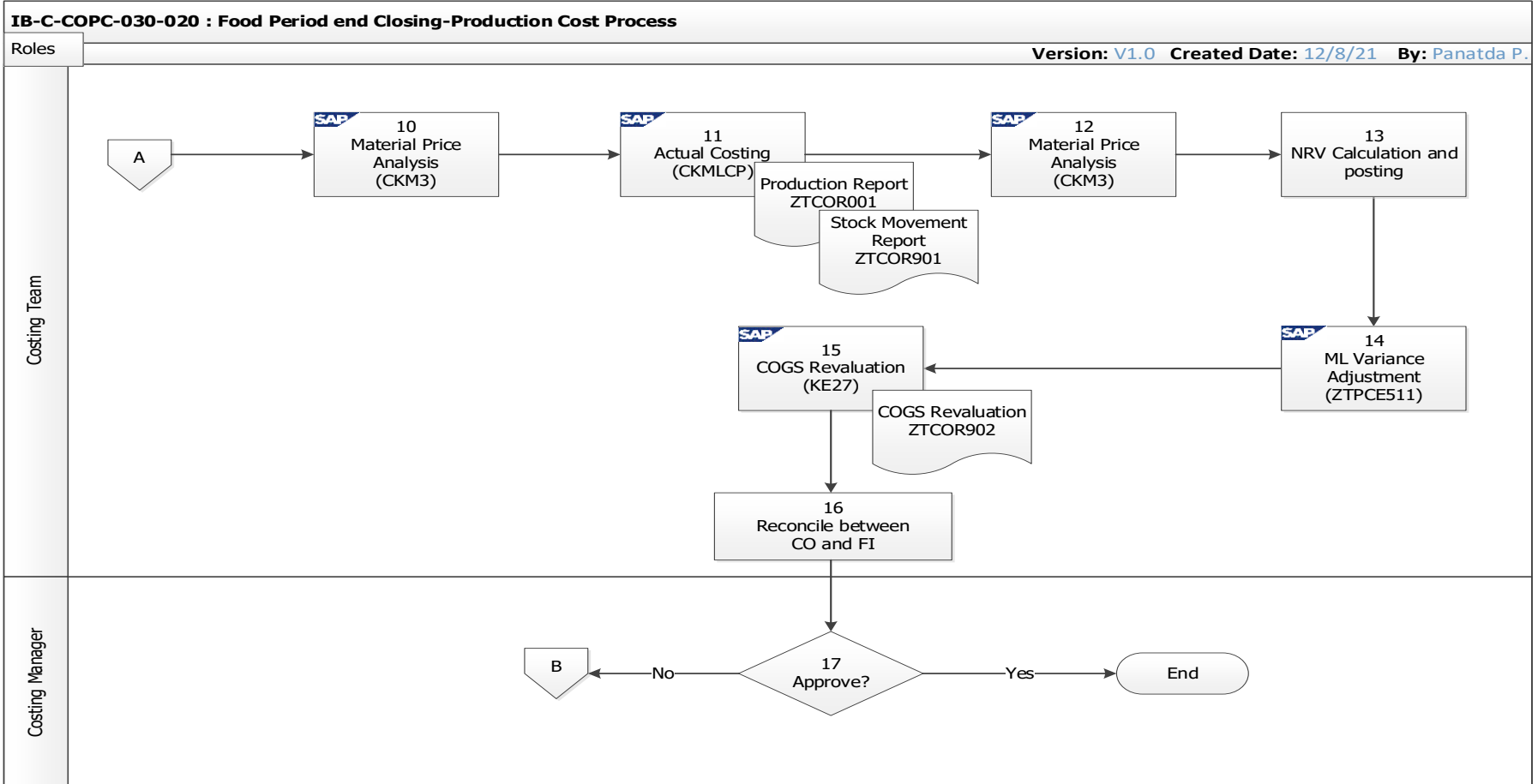


Course Overview

IB-C-COPC-030-020 Food Product Costing Period-End Closing **AROUND** (2/2)



SAP Implementation Project Module: Controlling



Course Overview

Period End Closing – Actual Costing

AROUND



Period End Closing by Actual Costing/Material Ledger Function is to calculate Production Cost of Semi-FG and FG. The system will distribute the Production Variance from Prior Process to Next Process (Roll-up) until the Product is sold. Data analysis can be compared between Standard Cost and Actual Cost.

Period End for Actual Costing Function called "**Actual Costing Run**"



Course Overview

Period End Closing – Process Flow Wrap-up

AROUND



Variance Calculation

Dr/Cr. 51xxxxxxxxx ผลต่างจากการผลิต 150
Cr./ Dr.53xxxxxxxxx ต้นทุนผลิตสินค้า 150

ML: Material Ledger

Process	Qty.	Prelim.	Pr. Diff.
Begin.	500	2,500	230
Receipt:			
- Prod.	200	1,000	150
Cumulative	700	3,500	380
Consump.
Ending

PA: Profitability Analysis

+ Revenue
- COGS
• Material Costs
• Direct Prod. Costs
• Overhead

+/- Variance

= Contribution Margin
Sales & Admin Cost

= Operating Profit
+/- Other Income & Exp.

= Net Profit

Revaluation Activity at Actual Price

Overhead

WIP Calculation

Variance Calculation

Order Settlement

Actual Costing with ML

Actual Costing Material Ledger: Transactions



Actual Costing Material Ledger Transaction Consists of:

T-Code: **CKMLCP**

Actual Costing Run

Course Outline

AROUND



Course Overview

Actual Costing Run

Q&A

Period End Closing-Actual Costing

CKMLCP – Create Actual Costing Run: **Header**

AROUND



Costing Cockpit: Actual Costing - Change / Execute

1

Costing run: A001_07 A001_07/2020

Period: 07 2020

Application: ACRU Actual Costing

Costing Cockpit Screenดังนี้

1. Create Press Create to create New Actual Costing Run

Create ML Costing Run / Run Reference

Costing run: 2 A001_07 4 A001_07/2020

Period: 7 2020 3

Actual Costing Run 5

2. Costing Run Input 'Costing Run' and description.

3. Period** – Input 'Period and Year' to execute actual costing.

** Actual Costing Run can be created "1 Costing Run/ Plant/Period/Year" only

** Should create all Plants under the same Company in 1 Costing Run because Betagro has Transfer Material between Plant also**

4. Enter Description of Actual Costing Run

5. Press "Continue" Or "ENTER"

Period End Closing-Actual Costing

CKMLCP – Create Actual Costing Run: **Plant Assignment**

AROUND



Costing Cockpit: Actual Costing - Change / Execute

Costing run: A001_07 A001 July 2020
Period: 7 | 2020
Application: ACRU Actual Costing

Actual Costing **Plant Assignment** 1

Assigned Plants

Plant	Plant name	CoCd	Co.Code
AC	Feed, Engi...	1020	Agro - 2 Co...

4

3

Available Plants

Plant	Plant name	CoCode	Company code
1001	ฟาร์มปลาปูน พันธุ์ Own Farm	1012	Food & Farm - 1 Co.,
3001	ฟาร์มไก่พันธุ์ Own Farm	1012	Food & Farm - 1 Co.,
3002	ไก่เนื้อ Own Farm	1012	Food & Farm - 1 Co.,
3003	ไก่เนื้อ จ้างเลี้ยง	1012	Food & Farm - 1 Co.,
3004	ไก่สาว/ไก่ไข่ Own Farm	1012	Food & Farm - 1 Co.,
3005	ไก่สาว จ้างเลี้ยง	1012	Food & Farm - 1 Co.,
6001	ฟาร์มสุกรรุ่น สาว พันธุ์ Own F	1012	Food & Farm - 1 Co.,
6002	ฟาร์มสุกรรุ่น จ้างเลี้ยง	1012	Food & Farm - 1 Co.,
6003	ฟาร์มสุกรสาว จ้างเลี้ยง	1012	Food & Farm - 1 Co.,
6004	ฟาร์มสุกรพันธุ์ จ้างเลี้ยง	1012	Food & Farm - 1 Co.,
B001	Pharmaceutical Factory	1014	Agro - 1 Co., Ltd.

Plants not selectable

1. **Plant Assignment** Tab to control Plant under Company
2. **Plant** Select "Plant" which is required to perform actual costing. (Should select all Production Plants)
3. Selected Plant will have orange color
4. Click to move to the left
5. Plant moved to Left column

Press SAVE

Period End Closing-Actual Costing

CKMLCP – Create Actual Costing Run: **Process**

AROUND



Actual Costing Flow Step

Costing Cockpit: Actual Costing - Change / Execute



Costing run	A001_07	A001_07/2020
Period	7	2020
Application	ACRU Actual Costing	

General Data

Processing

Flow step	Authori...	Locked	Parameters	Execute	Log	Mat Stat	Successf...	Erro...	Still op...	Act Stat	Successf...	Erro...	Still op...
Selection							0	0	0		0	0	0
Preparation							0	0	0		0	0	0
Settlement							0	0	0		0	0	0
Post Closi...							0	0	0		0	0	0
Mark Prices							0	0	0		0	0	0

The "Flow Steps" displayed.
Click Parameter  for each step.

Job Overview

Schedule Manager

Results



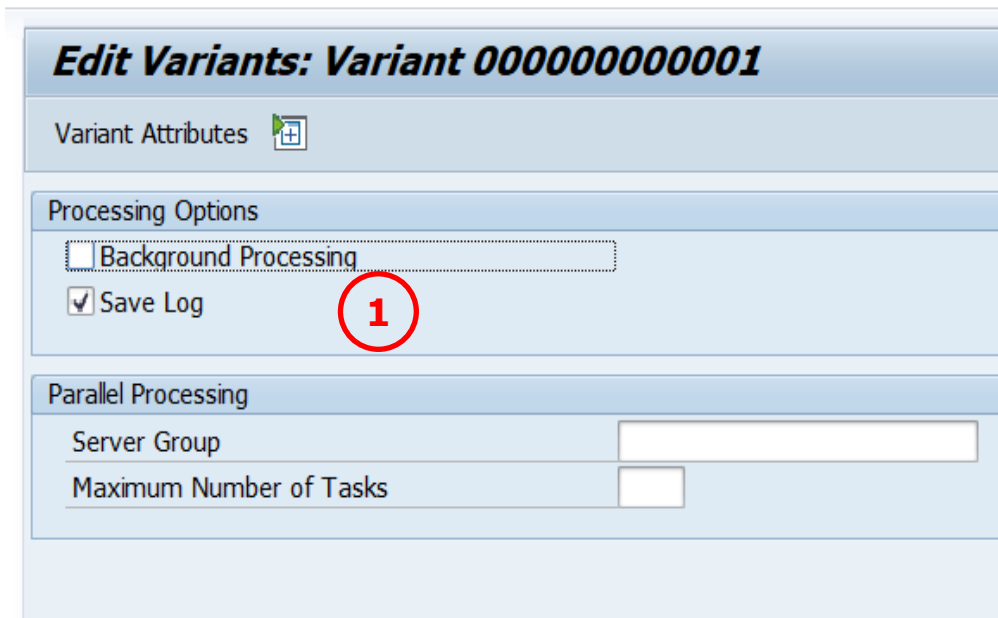
Period End Closing-Actual Costing

CKMLCP – Create Actual Costing Run: **Process**


AROUND



Actual Costing Flow Step: **Selection**



Edit Variants: Variant 0000000000001

Variant Attributes 

Processing Options

☐ Background Processing

☒ Save Log

Parallel Processing

Server Group

Maximum Number of Tasks

Step: Selection

System will select Material under the Plant to calculate Actual Costing. The selected Material will have Price Control = "**S**" and Price Determination = "**3**"

1. Unselect "Background Processing"

Press SAVE to save Parameter

Period End Closing-Actual Costing


CKMLCP – Create Actual Costing Run: **Process**

AROUND



Actual Costing Flow Step: **Preparation**

Edit Variants: Variant 0000000000001

Variant Attributes 

Treating Materials/Activities Already Processed

☐ Do not process ☒ Process Again

Processing Options

☐ Background Processing

☒ Save Log

Parallel Processing

Server Group

Maximum Number of Tasks

Process only selected Materials/Activities



Process selected Materials / no Activities



Process selected Activities / no Materials

Status Check for Previous Period

☐ Allow Open Status for Previous Period (Exceptional Processing -> F1)

Step: Preparation

System set the sequences of Production Variance Distribution from Prior Process to Next Process.

1. Unselect "Background Processing"

Press SAVE to save Parameter

Period End Closing-Actual Costing

CKMLCP – Create Actual Costing Run: **Process**

AROUND



Actual Costing Flow Step: **Settlement (1/2)**

Costing Cockpit: Actual Costing - Change / Execute



Costing run:

Period:

Application:

General Data

Processing

Flow step	Authorizn	Locked	Parameters	Execute	Log	Mat Stat	Successful	Errors	Still open	Act Stat	Successful	Errors	Still open
Selection							16	0	0				
Preparation		×					16	0	0				
Settlement		×					16	0	0				
Post Closing		×					0	0	16				
Mark Prices							0	0	0				

Step: Settlement

System will calculate the Single-level production variance and Multi-Level production Variance for each Material to be prepared the variance distribution (Roll-up) to the next process.

1. If Step "Settlement" has Locked, click to unlock to allow price determination.

Period End Closing-Actual Costing


CKMLCP – Create Actual Costing Run: **Process**

AROUND



Actual Costing Flow Step: **Settlement(2/2)**

Edit Variants: Variant 0000000000001

Variant Attributes 

Treating Materials/Activities Already Processed

☐ Do not process

1

☒ Process Again

Stock Coverage Check

☐ No Stock Coverage Check

2

Automatic Error Management

☒ Negative Price: Alternative Price Strategy

☒ No Convergence with Cycle: Cut Critical Connections

Processing Options

☒ Background Processing

☒ Save Log

3

Parallel Processing

Server Group

Maximum Number of Tasks

1. Treating Materials Already

Processed is the Indicator to let the system know how to process if the Material has the Single-Level Pr. Determine executed already.

2. Stock Coverage Check Unselect

3. Unselect “**Background Processing**”

Period End Closing-Actual Costing

CKMLCP – Create Actual Costing Run: **Process**

AROUND



Actual Costing Flow Step: **Settlement**

Material Price Analysis

Costing Cockpit Set Costing Run

Material: A230201007 ไม้ใบ 5-12cm/30cm

Plant: A001 Feed, Engineering, and lab.

Valuation Type:

Sales Order Stock/Project Stock

Period/Year: 7 2020 Period Status: Settlement Completed

Curr./Valuation: 10 Company code currency THB

Value: Actual Value Level + Lower Level Fixed + Variable

View: PS Price Determination Structure H Main Cost Component Split

Prices

Messages Object Source Document WIP

Category	Quantity	ValQtyUnit	PrelimVal	PriceDiff	ExRateDiff	ActualVal.	Price
Beginning Inventory	0 KG		0.00	0.00	0.00	0.00	0.00
Revaluation	0 KG		0.00	0.00	0.00	0.00	0.00
Receipts	500 KG		5,630.00	5,543.30-	0.00	5,630.00	11.26
Production	500 KG		5,630.00	5,543.30-	0.00	5,630.00	11.26
PVersion:D101	500 KG		5,630.00	5,543.30-	0.00	86.70	0.17
WL23201011/A001	0 KG		0.00	5,537.69-	0.00	5,537.69	0.00
1000000228 Order Settlement 800000	0 KG		0.00	5.61-	0.00	5.61-	0.00
1000000151 Goods receipt 800000/1	500 KG		5,630.00	0.00	0.00	5,630.00	11.26
Cumulative Inventory	500 KG		5,630.00	5,543.30-	0.00	86.70	0.17
Ending Inventory	500 KG		5,630.00	5,543.30-	0.00	86.70	0.17
Ending Inventory	500 KG		5,630.00	0.00	0.00	5,630.00	11.26
Settlement	0 KG		0.00	5,543.30-	0.00	5,543.30-	0.00

Variance From lower Level

Variance From Single Level

Period End Closing-Actual Costing

CKMLCP – Create Actual Costing Run: **Process**

AROUND



Revaluation of Consumption - Example

Curr./Valuation	10 Company code currency						THB
View	PS Price Determination Structure						
Prices and Inventory Values							
Messages Closing Document							
Category	Quantity	Unit	PrelimVal	Price diff	ExRt diff.	Price	Currency
Beginning Inventory	0	PC	0.00	0.00	0.00	0.00	THB
Receipts	30,000	PC	400,800.00	1,468,149.55	0.00	62.30	THB
Cumulative Inventory	30,000	PC	400,800.00	1,468,149.55	0.00	62.30	THB
Consumption	30,000	PC	400,800.00	1,468,149.55	0.00	62.30	THB
Consumption	30,000	PC	400,800.00	1,468,149.55	0.00	62.30	THB
4000000001 Revaluation of Consumption	0	PC	0.00	1,468,149.55	0.00	0.00	THB
1000000010 TF fr Iss. Val. CST 685	30,000	PC	400,800.00	0.00	0.00	13.36	THB
Ending Inventory	0	PC	0.00	0.00	0.00	62.30	THB

Period End Closing-Actual Costing

CKMLCP – Create Actual Costing Run: **Process**

AROUND



Actual Costing Flow Step: **Post Closing (1/2)**

Processing	Flow step	Authori...	Locked	Parameters	Execute	Log	Mat Stat	Successf...	Erro...	Still op...
	Selection							16	0	0
	Preparation							16	0	0
	Settlement							16	0	0
	Post Closi...		1					0	0	16
	Mark Prices							0	0	0

Processing	Flow step	Authori...	Locked	Parameters	Execute	Log	Mat Stat	Successf...	Erro...	Still op...
	Selection							16	0	0
	Preparation							16	0	0
	Settlement							16	0	0
	Post Closi...		2					0	0	16
	Mark Prices							0	0	0

Step: Post Closing

System will Post Accounting of the Production Variance that distributed to each step including Remaining Inventory at the month end and for COGS.

1. If Step "Post Closing" has Locked, click to unlock to allow Post Closing
2. If Step "Post Closing" has Unlocked, the system is ready to Post Closing

Period End Closing-Actual Costing

CKMLCP – Create Actual Costing Run: **Process**

AROUND



Actual Costing Flow Step: **Post Closing (2/2)**

Edit Variants: Variant 0000000000003

Variant Attributes

Processing type

☒ Execute **1** ☐ Reverse

Parameters

☒ Revaluate material **2**

☒ Revaluate Consumption **3**

☒ Set CO Account Assignment **4**

Processing options

☐ Background Processing

☒ Test run **5**

☒ Save log

No. of Materials in ML Doc.

- 1. Processing type** Select Processing Type
- 2. Revaluate Material** Select to update remaining inventory to be Actual Production Cost
- 3. Revaluate Consumption** Select to update COGS, Consume Process to be Actual Cost
- 4. Set CO Account Assignment** Select to record the Revalue data to related object
- 5. Processing options**
 - Unselect "Background Processing"
 - "Test Run"
 - Select "Save log"

Period End Closing-Actual Costing

CKMLCP – Create Actual Costing Run: **Processing**

AROUND



Costing Cockpit: Actual Costing - Change / Execute



Costing run: A001_07 A001 July 2020

Period: 7 2020

Application: ACRU Actual Costing

General Data

Processing

Flow step	Authori...	Locked	Parameters	Execute	Log	Mat Stat	Successf...	Erro...	Still op...	Act Stat	Successf...	Erro...	Still op...
Selection			▶▶	▶▶	▶▶	■	16	0	0		0	0	0
Preparation	■	✗	▶▶	▶▶	▶▶	■	16	0	0		0	0	0
Settlement	■	✗	▶▶	▶▶	▶▶	■	16	0	0		0	0	0
Post Closi...	■	✗	▶▶	▶▶	▶▶	■	16	0	0		0	0	0
Mark Prices			▶▶	▶▶	▶▶		0	0	0		0	0	0

Period End Closing-Actual Costing

CKMLCP – Create Actual Costing Run: **Process**

AROUND



Actual Costing Flow Step: **Post Closing - Example**

Material Price Analysis

Costing Cockpit Set Costing Run

Material: A230201007 ไม้ 5-12สปร/30กน

Plant: A001 Feed, Engineering, and lab.

Valuation Type:

Sales Order Stock/Project Stock

Period/Year: 7 2020 Period Status: Closing Entries Complete

Curr./Valuation: 10 Company code currency THB

Value: Actual Value Level + Lower Level Fixed + Variable

View: PS Price Determination Structure H Main Cost Component Split

Prices

Messages Object Closing Document Source Document WIP

Category	Quantity	ValQtyUnit	PrelimVal	PriceDiff	ExRateDiff	ActualVal.
Beginning Inventory	0 KG		0.00	0.00	0.00	0.00
Revaluation	0 KG		0.00	0.00	0.00	0.00
Receipts	500 KG		5,630.00	5,543.30-	0.00	86.70
Production	500 KG		5,630.00	5,543.30-	0.00	86.70
PVersion:D101	500 KG		5,630.00	5,543.30-	0.00	86.70
WL23201011/A001	0 KG		0.00	5,537.69-	0.00	5,537.69-
1000000228 Order Settlement 800000	0 KG		0.00	5.61-	0.00	5.61-
1000000151 Goods receipt 800000/1	500 KG		5,630.00	0.00	0.00	5,630.00
Cumulative Inventory	500 KG		5,630.00	5,543.30-	0.00	86.70
Ending Inventory	500 KG		5,630.00	5,543.30-	0.00	86.70
Ending Inventory	500 KG		5,630.00	0.00	0.00	5,630.00
Settlement	0 KG		0.00	5,543.30-	0.00	5,543.30-

Period End Closing-Actual Costing

CKMLCP – Create Actual Costing Run: **Process**

AROUND



Actual Costing Flow Step: **Post Closing - Example**

Display Document: Data Entry View

Display Currency General Ledger View

Data Entry View

Document Number: 6400000001 Company Code: 1020 Fiscal Year: 2020

Document Date: 09.08.2020 Posting Date: 31.07.2020 Period: 7

Reference: Cross-Comp.No.:

Currency: THB Texts Exist: ☐ Ledger Group:

CoCd	Item	Key	Account	Description	Amount	Curr.	Tx	Cost Center	Profit Center	Text
1020	1	99	1503010010	Finished products	5,543.30	THB			20A001	BESTD: Debit/credit material
	2	83	5309130000	P.Dif.A.ML S.FG-PRY	5,543.30	THB			20A001	EBPRD: Write off price differences
	3	99	1503020010	Semi Finished Goods	5,482.31	THB			20A001	BESTD: Debit/credit material
	4	93	5309140000	P.Dif.A.ML S.SFG-PRY	5,537.69	THB			20A001	EBPRD: Write off price differences
	5	83	5109030020	Price Adj.V.SFG-UMB	11,020.00	THB		2020110000	20A001	AUFUM: Write off of revaluation amo...
	6	83	5309140000	P.Dif.A.ML S.SFG-PRY	5,537.69	THB			20A001	VNPRD: Offset against price differenc...
	7	93	5309130000	P.Dif.A.ML S.FG-PRY	5,537.69	THB			20A001	ZUPRV: Price differences from previou...
	8	89	1503020010	Semi Finished Goods	2.99	THB			20A001	BESTD: Debit/credit material
	9	93	5309140000	P.Dif.A.ML S.SFG-PRY	2.99	THB			20A001	EBPRD: Write off price differences
	10	83	5309140000	P.Dif.A.ML S.SFG-PRY	0.01	THB			20A001	VNPRD: Offset against price differenc...
	11	93	5309140000	P.Dif.A.ML S.SFG-PRY	0.01	THB			20A001	ZUPRV: Price differences from previou...
	12	83	5309140000	P.Dif.A.ML S.SFG-PRY	0.03	THB			20A001	VNPRD: Offset against price differenc...
	13	93	5309140000	P.Dif.A.ML S.SFG-PRY	0.03	THB			20A001	ZUPRV: Price differences from previou...
	14	93	5309140000	P.Dif.A.ML S.SFG-PRY	2.77	THB			20A001	VNPRD: Offset against price differenc...
	15	83	5309140000	P.Dif.A.ML S.SFG-PRY	2.77	THB			20A001	ZUPRV: Price differences from previou...
	16	89	1503020010	Semi Finished Goods	0.12	THB			20A001	BESTD: Debit/credit material
	17	93	5309140000	P.Dif.A.ML S.SFG-PRY	0.12	THB			20A001	EBPRD: Write off price differences
	18	93	5309140000	P.Dif.A.ML S.SFG-PRY	0.03	THB			20A001	VNPRD: Offset against price differenc...
	19	83	5309140000	P.Dif.A.ML S.SFG-PRY	0.03	THB			20A001	ZUPRV: Price differences from previou...
	20	93	5309140000	P.Dif.A.ML S.SFG-PRY	0.13	THB			20A001	VNPRD: Offset against price differenc...
	21	83	5309140000	P.Dif.A.ML S.SFG-PRY	0.13	THB			20A001	ZUPRV: Price differences from previou...

Product Costing and Material Ledger Reports : Transactions

AROUND



Example Material Ledger Standard Reports consists of:

- ▶ T-Code: **CKMVFM**
Value Flow Monitor
- ▶ T-Code: **S_P99_41000062**
Prices and Inventory Values
- ▶ T-Code: **CKMTOPSTOCKVAL**
Materials with Highest Inventory Value
- ▶ T-Code: **COMLWIPDISP**
Display of WIP for Actual Costs
- ▶ T-Code: **MLCCSPD**
Actual Cost Components
- ▶ T-Code: **CKMLQS**
Valuated Quantity Structure (Multilevel)
- ▶ T-Code: **CKM3**
Material Price Analysis

Course Outline

AROUND



Course Overview

Actual Costing Run

Q&A

???



Q & A

