



Key User Training Document

PC301 - Material Ledger

28 / 12 / 2021

Version: 1.0

Author: Panatda Prajuabdee

Course Information

AROUND



Course ID	PC301
Course Description	Material Ledger
Course Duration	2 hrs.
Course Pre-requisite	PC201, PC202
Course Objective	<ul style="list-style-type: none">• Understand the functions and features in Product Costing and Material Ledger

Course Information

AROUND



Table of Content (สารบัญ)

- Actual Costing Material Ledger Overview
- Material Price Analysis

Output (ผลที่คาดว่าจะได้รับ)

Better Understand the functions in Product Costing and Material Ledger



Course Overview

Actual Costing Overview

Material Price Analysis

Material Price Change

Q&A

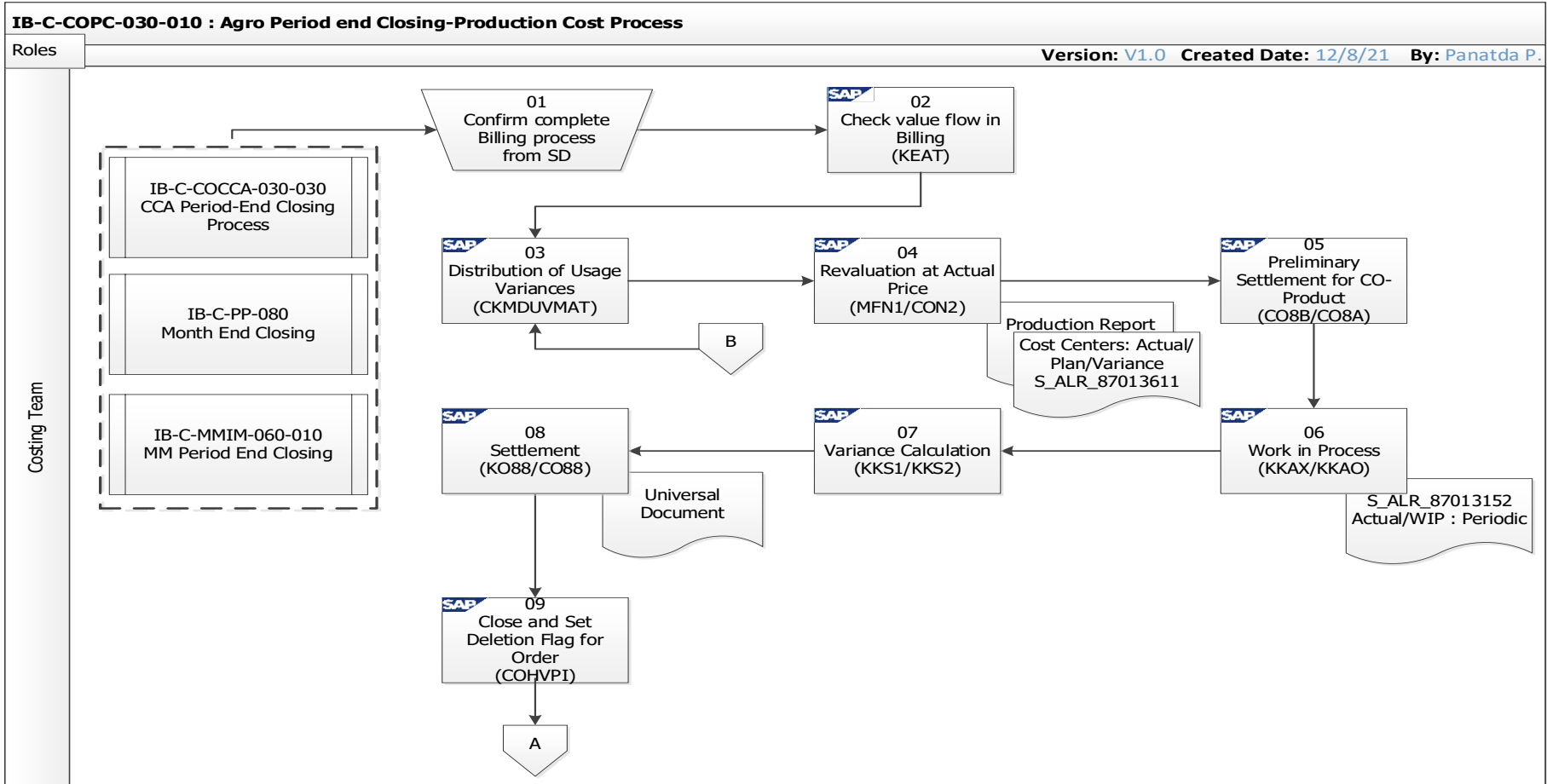
Course Overview

IB-C-COPC-030-010 Agro Product Costing Period-End Closing (1/2)

AROUND



SAP Implementation Project Module: Controlling



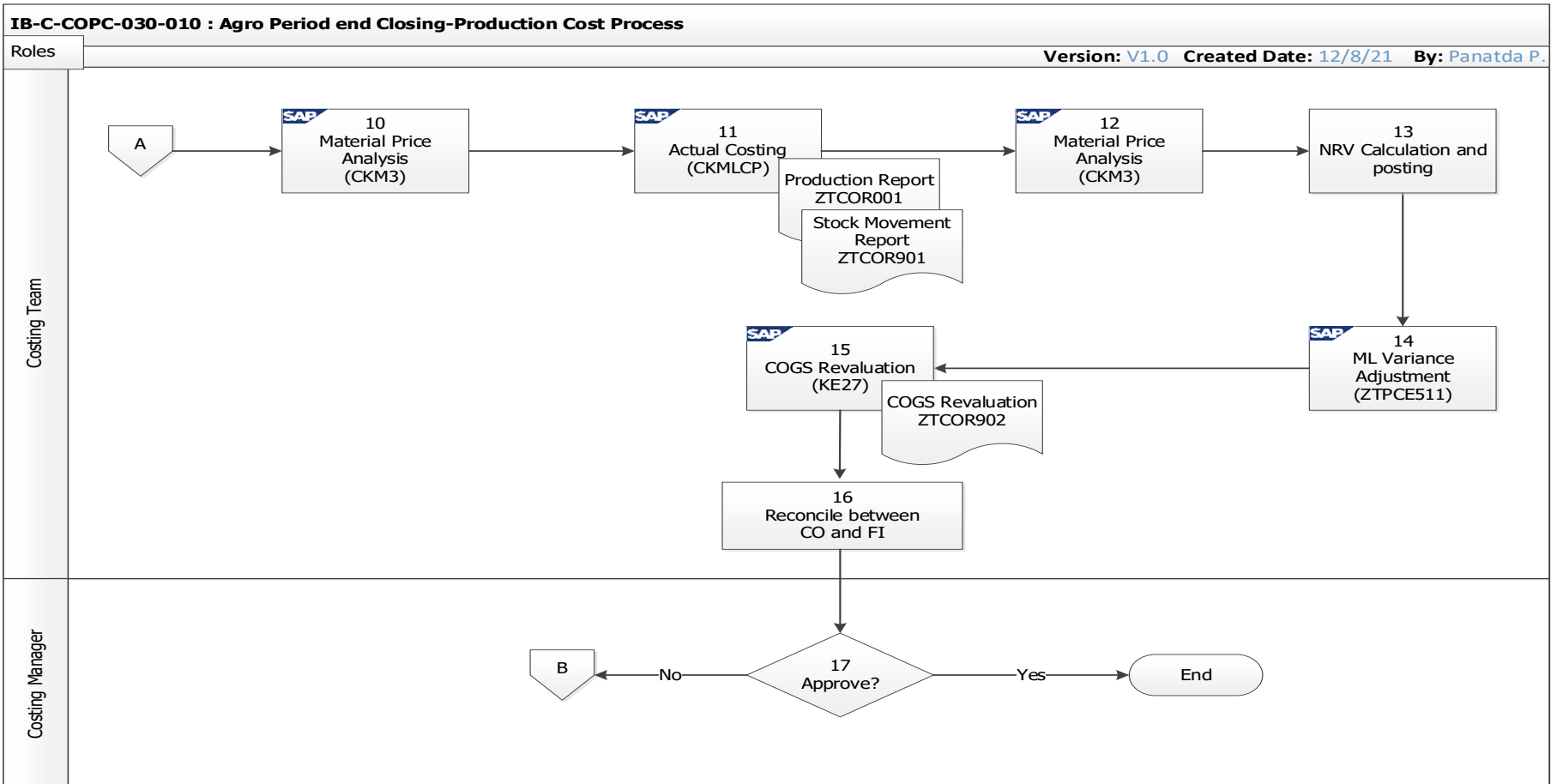
Course Overview

IB-C-COPC-030-010 Agro Product Costing Period-End Closing (2/2)

AROUND



SAP Implementation Project Module: Controlling



Course Overview

IB-C-COPC-030-020 Food Product Costing Period-End Closing

AROUND

(1/2)



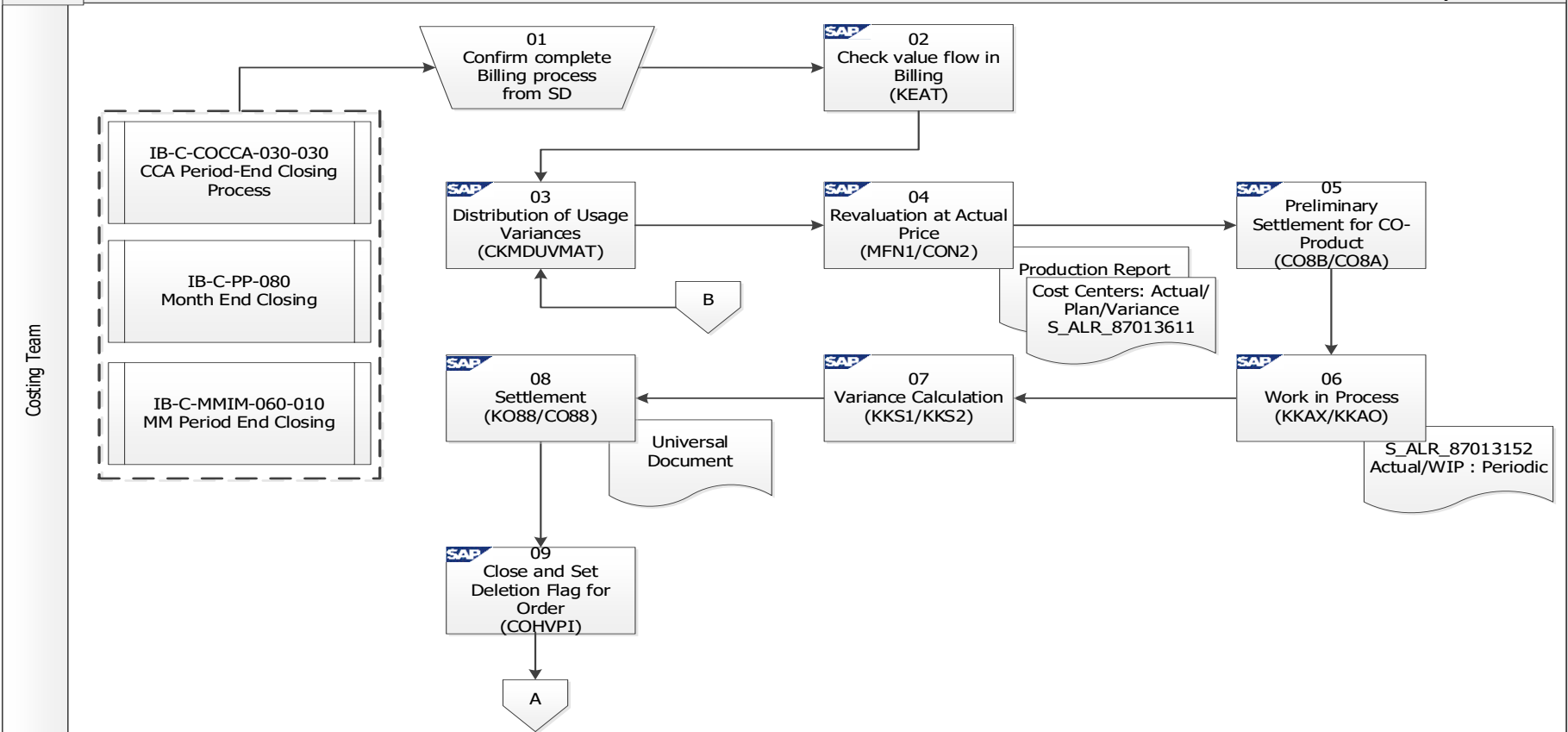
SAP Implementation Project Module: Controlling



IB-L-COPC-030-020 : Food Period end Closing-Production Cost Process

Roles

Version: V1.0 Created Date: 12/8/21 By: Panatda P.



Course Overview

IB-C-COPC-030-020 Food Product Costing Period-End Closing

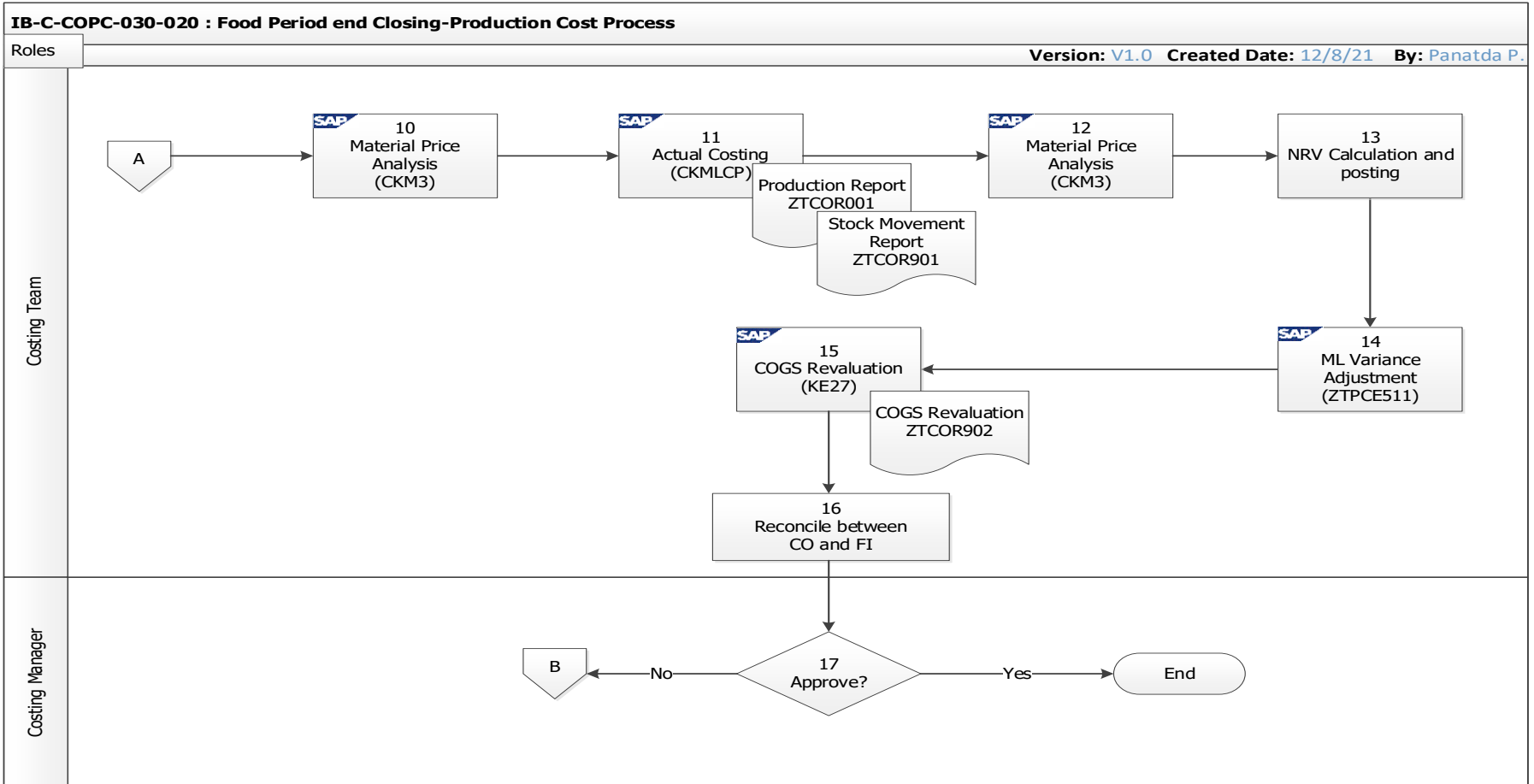
AROUND



(2/2)



SAP Implementation Project Module: Controlling





Course Overview

Actual Costing Overview

Material Price Analysis

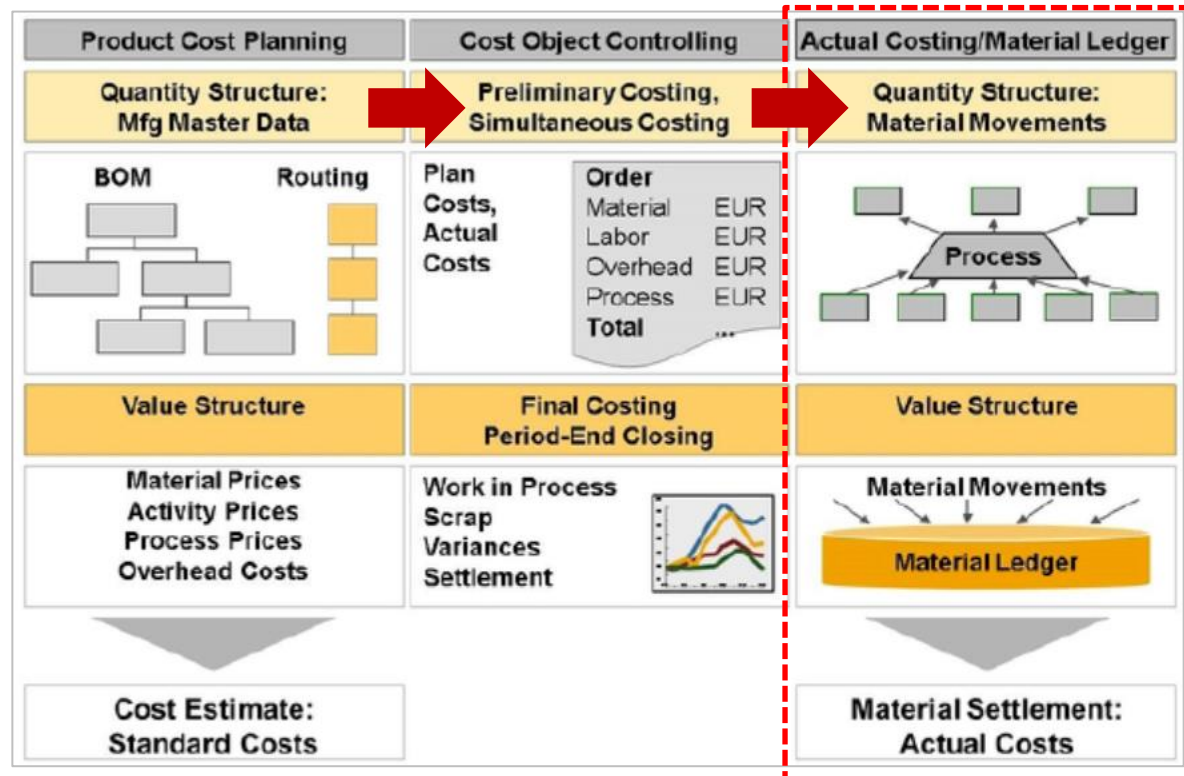
Material Price Change

Q&A

Material Ledger Overview

Actual Costing/Material Ledger

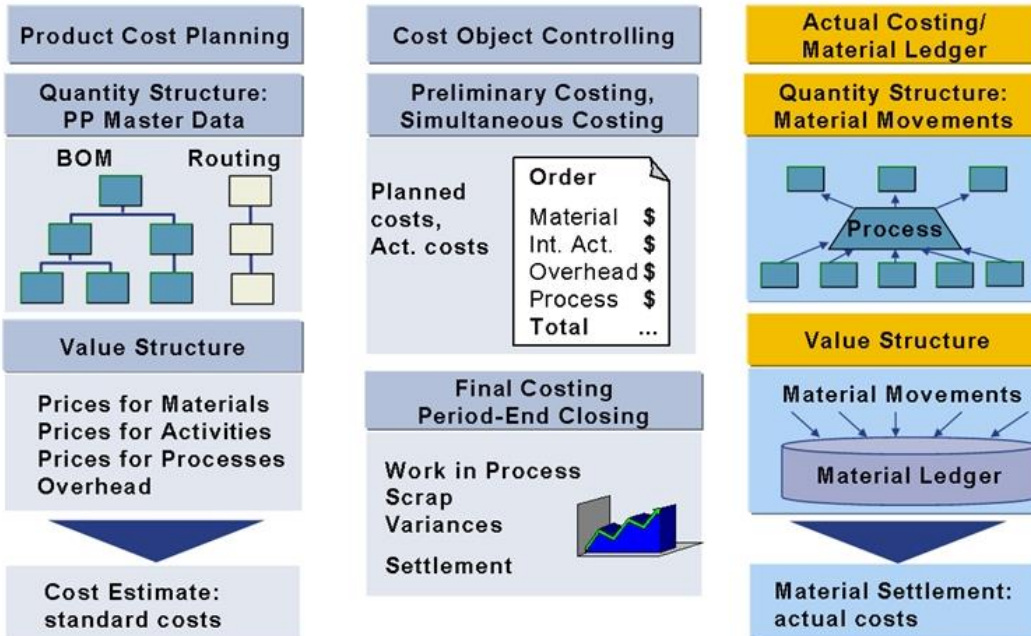
AROUND



Actual Costing Overview

Actual Costing/Material Ledger

AROUND



Actual costing is used to calculate the actual cost of goods manufactured at the end of the period.

The result can be saved in the material master as a periodic average price for the closed period. The quantity structure is derived dynamically from the material movements in the SAP S/4 HANA application.

The values connected with these movements are collected in the material ledger. With multilevel settlement, you allocate variances over multiple procurement levels.

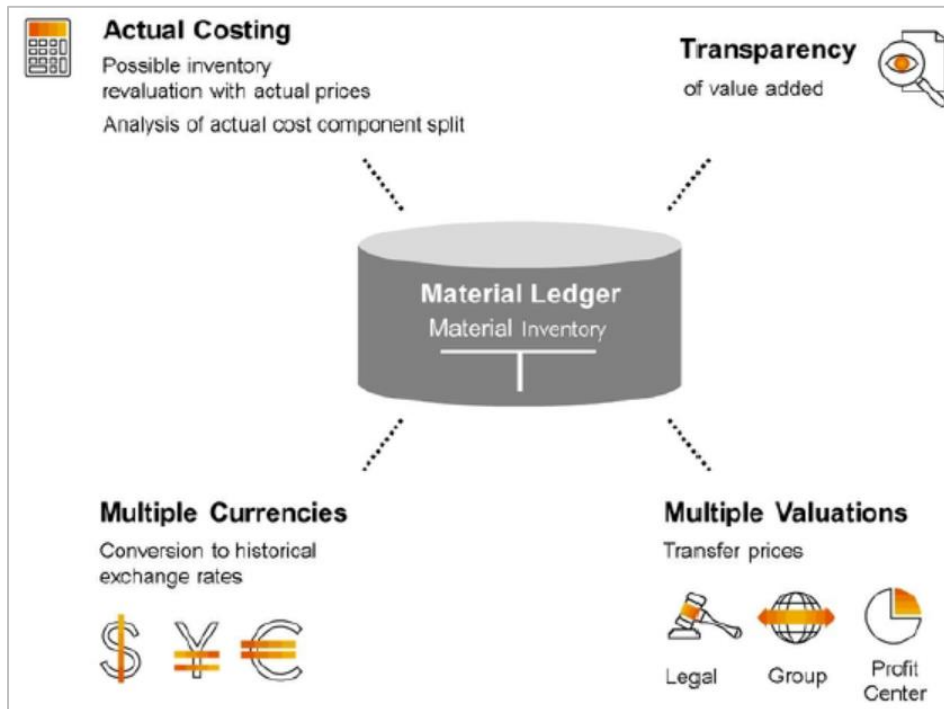
Betagro – IB Material Currencies as below:

- Company Code Currency (USD,LAK)
- Group Currency (THB)
- Hard Currency (USD)

Actual Costing Overview

Actual Costing/Material Ledger

AROUND



Concept Behind Actual Costing

When you use actual costing, all goods movements within a period are valued preliminarily at the standard price. At the same time, all price and exchange rate differences for the material are collected in the material ledger.

At the end of the period, an actual price is calculated for each material based on the actual costs of the particular period.

The actual price that is calculated is called the **periodic unit price** and can be used to revalue the inventory for the period to be closed. In addition, this actual price can be used as the standard price for the next period.

Actual Costing Overview

Value Flow into Material Ledger

AROUND

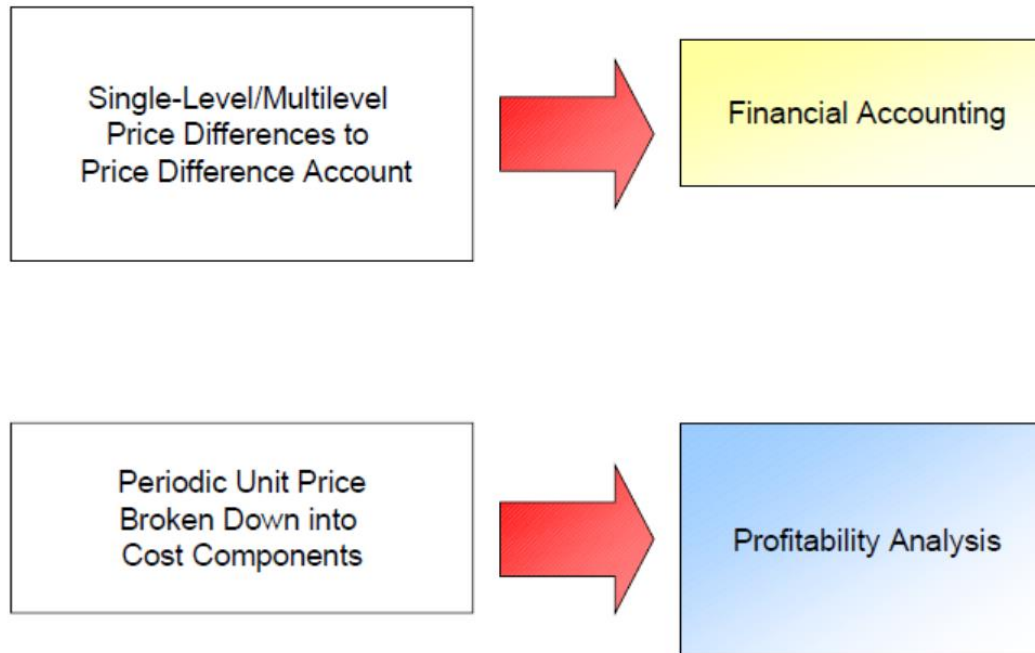


Component	Transaction	Data Flow to ML
CO-PC Cost Planning	Standard Cost Estimate	<ul style="list-style-type: none"> - Preliminary Valuation - Cost Component (Std.)
	Standard Price	
	Cost Component (Std.)	
MM - Material Master	Goods Movements	<ul style="list-style-type: none"> - Single-level Price Diff. - Quantities
	Purchase Order (FG/SFG)	
	Invoice Receipt	
	Purchase Order (FG/SFG)	
PP - Production	Goods Movements	<ul style="list-style-type: none"> - Preliminary Valuation - Quantities
	Process Order	
	Product Cost Collector	
CO-PC Period End Closing	Settlement	<ul style="list-style-type: none"> - Single-level Price Diff. (Production Variance)
	Process Order	
	Product Cost Collector	

Material Ledger Overview

Actual Costing/Material Ledger: Value Flow out of Material Ledger

AROUND



Material Ledger Overview

Actual Costing/Material Ledger: Price Control and Price Determination

AROUND



Combinations of Price Control and Price

Price Determination	Price Control Indicator S	Price Control Indicator V
3 single-/multilevel	Standard price (with the moving average price for information)	Not an option as the valuation price of the current posting period If you reevaluate the material inventories at the time of the closing entry, the periodic unit price is stored as the valuation price for the closed posting period under price control indicator V.
2 transaction-based	Standard price (with the moving average price for information purposes)	Moving average price

Price Determination

indicator in the material master determines whether Price determination is:

- Transaction-based
- Single-level / multilevel

These control parameters are in the Accounting 1 view of the material's master record.

Actual Costing Overview

Material Master: Price Control and Price Determination

AROUND



Display Material D3122XXN02 (Livestock)

Additional Data Org. Levels

Plant data / stor. 2 Accounting 1 Accounting 2 Costing 1 Costing 2 Plant stock St...

Period 012.2021 Period 011.2021 Period 012.2020 Future Costing Run Current Costing Run

General Valuation Data

Total Stock	52	Base Unit	EA each
Division	27	Valuation Cat.	
Valuation Class	D304	<input type="checkbox"/> Valuated UoM	
VC: Sale Ord. Stk		<input checked="" type="checkbox"/> ML Act.	Mat. Price Analysis
Project Stock VC		Price Determ.	3 Single-/Multilevel

Prices and Values

Crcy Type	Company code currency	Group currency	Hard currency
Ledger	0IL	0IL	0IL
Currenc	Company Code Currency	Group Currency	Hard Currency
Valuation	Legal	Legal	Legal
Currency	USD	THB	USD
Standard Price	240.55	7,697.74	240.55
Price Unit	1	1	1
Price Control	S	S	S
Inventory Value	12,508.60	400,282.48	12,508.60
Future Price	0.00	0.00	0.00
Future Price From			
Previous Price	165,023.76		
Last Price Change	12.11.2021		

Cost Components

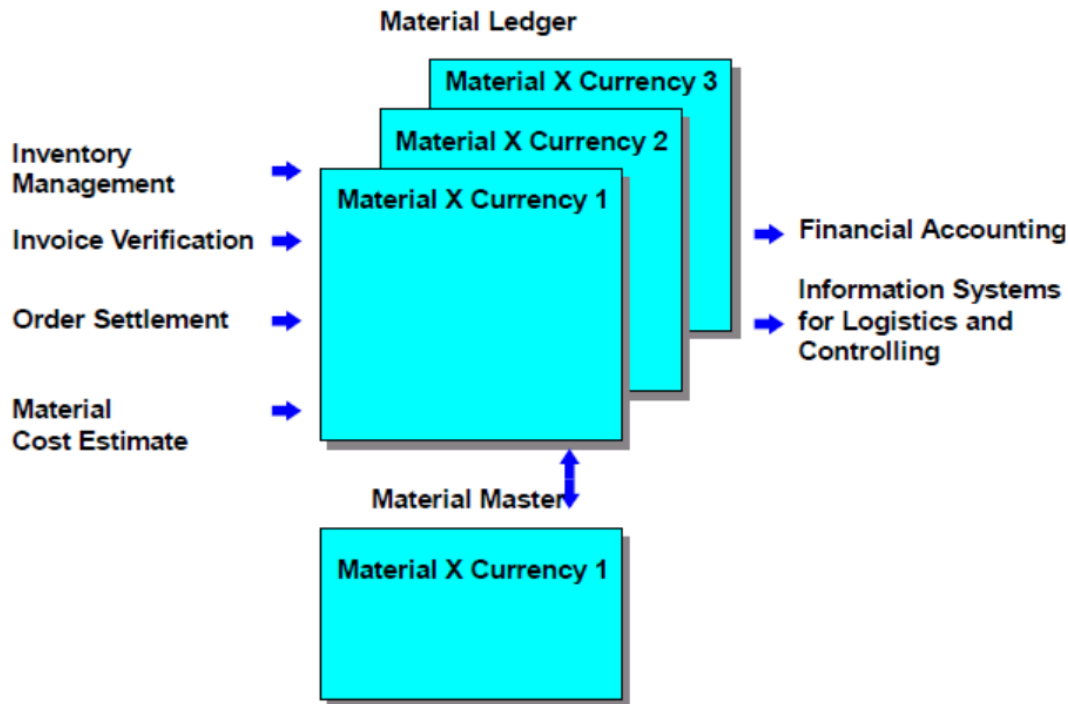
Certain prerequisites in Customizing must be met in order to value a material using the material ledger:

- The material ledger must be active for the material.
- The material must be assigned to a valuation class.
- The material type must allow the material's valuation to be updated.

Material Ledger Overview

Actual Costing/Material Ledger: Actual Data of Material Ledger

ABOUND

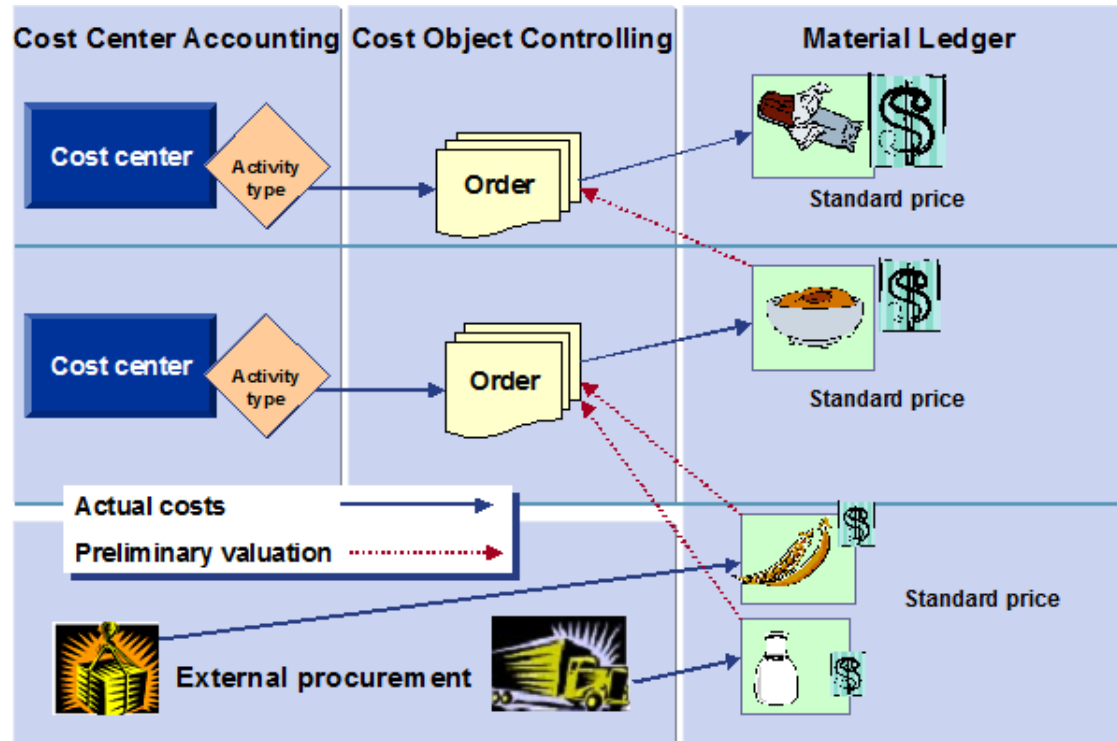


When the material ledger is active, the system automatically collects specific information on valuation-relevant transactions and account postings from inventory management, invoice verification and order settlement, and uses this data during material price determination.

Actual Costing Overview

Preliminary Valuation Price

AROUND

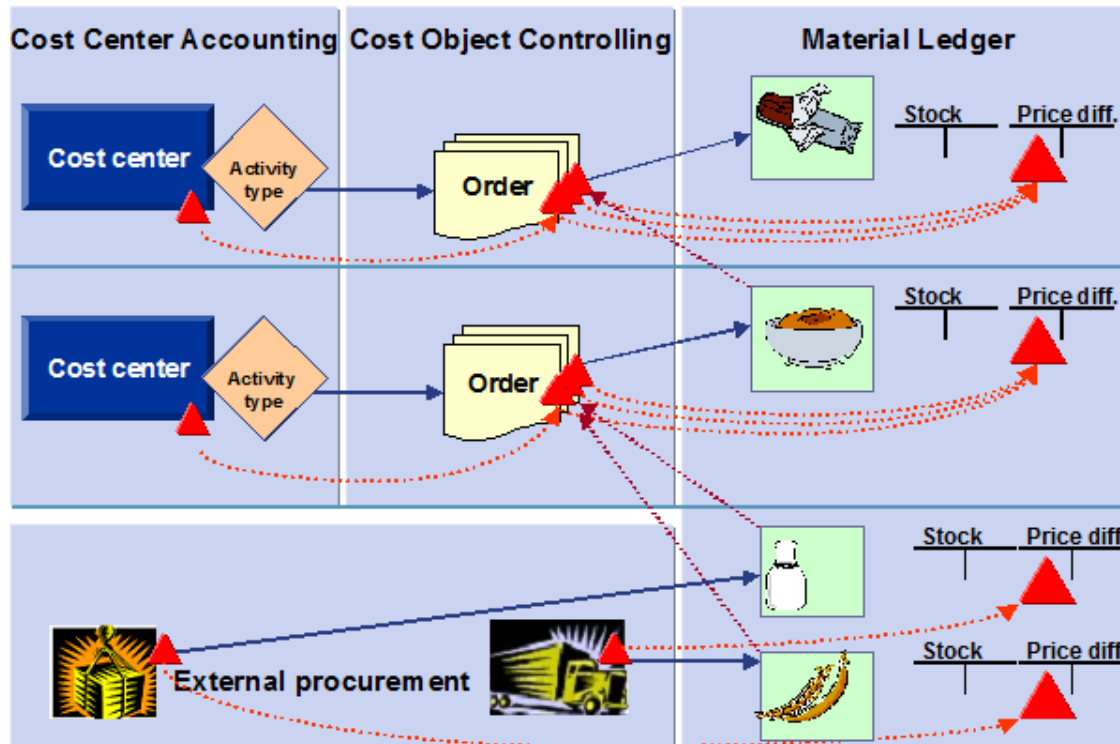


Preliminary Valuation is Value of the material with the indicator "Price determination 3" in the material master. The transaction was posted at the standard price with this value.

Actual Costing Overview

Single-Level Price Determination

AROUND

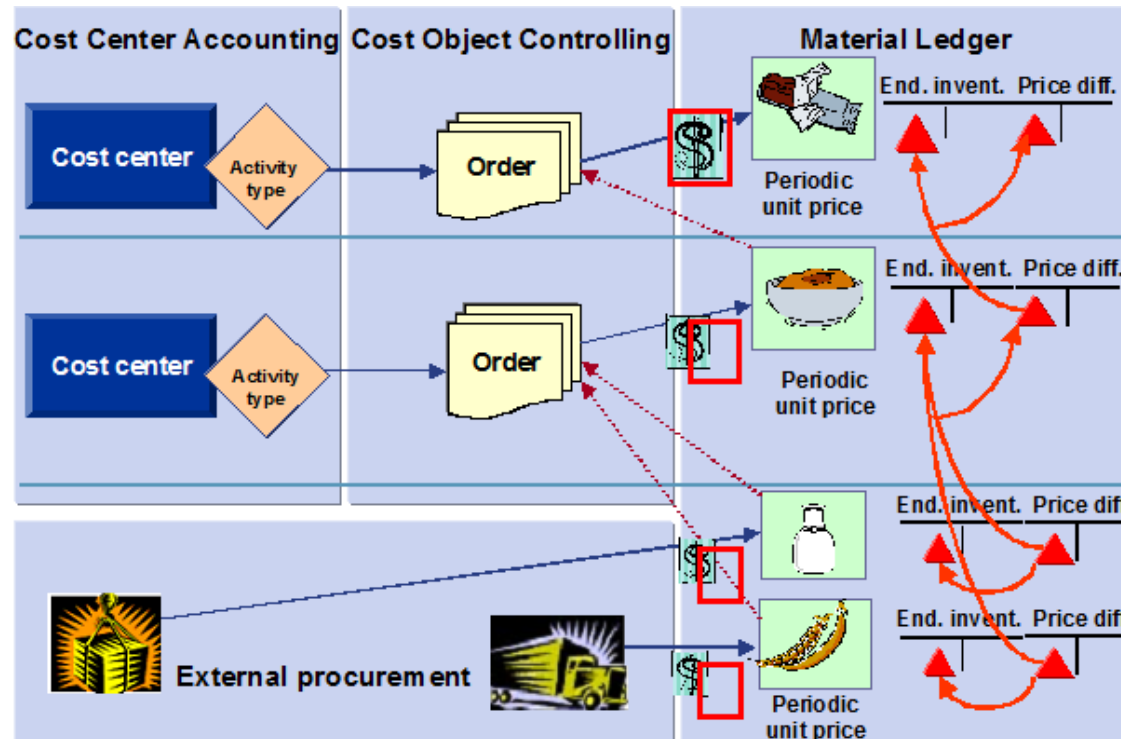


Single-level price variance is the price variance of the Material from Procurement or Process order/Product cost collector settlement.

Actual Costing Overview

Multi-Level Price Determination

AROUND



Multi-level price variance is the variance to allocate to next production process. So Single-level price variance of raw materials will allocate to Semi-FG then price variance of Semi-FG will allocate to FG follows Production process step.

**For Betagro, Raw materials has price control = "V" (Moving average) so there is NO Single-level price variance for raw material. No price variance from RM allocates to Semi-FG.

The Cost of raw material will be included in Semi-FG by moving average price of the transaction date.

Actual Costing Material Ledger: Transactions



Actual Costing Material Ledger Transaction consists of:

T-Code: **CKM3**

Display Material Price Analysis

T-Code: **MR22**

Actual Cost (Debit/Credit Material)



Course Overview

Actual Costing Overview

Material Price Analysis

Material Price Change

Q&A

Actual Costing Material Ledger

CKM3 – Material Price Analysis (1/3)

AROUND



Material Price Analysis

Costing Cockpit

Set Costing Run

Material

I000004628

Plant

H5C1

BGC-Swine Cutup

Valuation Type

Sales Order Stock/Project Stock

Period/Year

12

2021

Period Status

Relevant for Settlement

Curr./Valuation

10 Company code currency

USD

Value

Actual Value

Level + Lower Level

Fixed + Variable

☐ Display All Cost Components

View

PS Price Determination Structure

H Main Cost Component Split

Prices

<

Actual Costing Material Ledger

CKM3 – Material Price Analysis (1/3)

AROUND



Material Price Analysis

Costing Cockpit

Set Costing Run

Material

I000004628

W-สุกรผ่าซีกแช่เย็น RM BTG SIZE M

Plant

H5C1

BGC-Swine Cutup

Valuation Type

Sales Order Stock/Project Stock

Period/Year

11

2021

Period Status

Closing Entries Completed

Curr./Valuation

10 Company code currency

USD

Value

Actual Value

Level + Lower Level

Fixed + Variable

Dis

View

PS Price Determination Structure

H Main Cost Component Split

Prices

1. **Preliminary Valuation** is Value of the material with the indicator "Price determination 3" in the material master. The transaction was posted at the standard price with this value.

2. **Price Difference** is the difference value between total posted amount and preliminary valuation amount.

3. **Actual Value** is the sum of "Preliminary valuation" and "Price difference".

4. **Periodic Unit Price** is "Actual Price" to value a material after the closing entry at the period-end.

Actual Costing Material Ledger

CKM3 – Material Price Analysis(2/3)

AROUND



Material Price Analysis

Costing Cockpit Set Costing Run

Material: A210104003 บาลานส์ 910 ไก่เนื้อแรกเกิด-3สป/30กก

Plant: A9C1 BGC-Feed mill

Valuation Type:

Sales Order Stock/Project Stock

Period/Year: 11 2021 Period Status: 1 ■ ■ ■ ■ Closing Entries Completed

Curr./Valuation: 10 Company code currency USD

Value: Actual Value Level + Lower Level Fixed + Variable

View: PS Price Determination Structure H Main Cost Component Split

1. Period Status is the indicator to display Period End Closing of Actual Costing for each step as below:

- Single-level Price Determination Completed
- Multi-level Price Determination Completed
- Revaluation of Consumption Completed
- WIP Revaluation Completed
- Closing Entry Completed

Actual Costing Material Ledger

CKM3 – Material Price Analysis (3/3)

AROUND



Category	Trns Qty	ValQtyUnit	PrelimVal	PriceDiff	ExRateDiff	ActualVal.	Price
Beginning Inventory	0 KG		0.00	0.00	0.00	0.00	0.00
Receipts	265,000.010 KG		...300.01	281,573.20-	0.00	41,726.81	0.16
Procurement	30,000.010 KG		36,600.01	0.00	0.00	36,600.01	1.22
Production	235,000 KG		...700.00	281,573.20-	0.00	5,126.80	0.02
PVersion:D101	235,000 KG		...700.00	281,573.20-	0.00	5,126.80	0.02
WI21104002/A9C1	0 KG		0.00	252,864.15-	0.00	252,864.15-	0.00
1000001077 Order Settlement 4100000003	0 KG		0.00	28,709.05-	0.00	28,709.05-	0.00
1000000327 Goods receipt 4100000003/1	45,000 KG		54,900.00	0.00	0.00	54,900.00	1.22
1000000217 Goods receipt 4100000003/1	30,000 KG		36,600.00	0.00	0.00	36,600.00	1.22
1000000056 Goods receipt 4100000003/1	30,000 KG		36,600.00	0.00	0.00	36,600.00	1.22
1000000055 Goods receipt 4100000003/1	30,000 KG		36,600.00	0.00	0.00	36,600.00	1.22
1000000010 Goods receipt 4100000003/1	100,000 KG		...000.00	0.00	0.00	122,000.00	1.22
Cumulative Inventory	265,000.010 KG		...300.01	281,573.20-	0.00	41,726.81	0.16
Consumption	265,000 KG		...300.00	281,573.19-	0.00	41,726.81	0.16
Consumption	234,999.990 KG		...699.99	249,696.97-	0.00	37,003.02	0.16
Consumption for single-level orders	30,000.010 KG		36,600.01	31,876.22-	0.00	4,723.79	0.16
Ending Inventory	0.010 KG		0.01	0.01-	0.00	0.00	0.00
Ending Inventory	0.010 KG		0.01	0.00	0.00	0.01	1.00
Settlement	0 KG		0.00	0.01-	0.00	0.01-	0.00

2. Transactions from Single-level Price Determination
3. Multi-level Price Determination Transaction
4. Actual Price after Actual Costing Period End Closing is finished. The Price is called **"Periodic Unit Price"** (PuP)

System will uses PuP to value a material after the closing entry at the period-end.



Course Overview

Actual Costing Overview

Material Price Analysis

Material Price Change

Q&A

Actual Costing Material Ledger

MR22 – Material Price Change

AROUND



Debit/Credit Material: Overview Screen

Display Document



Posting Date 27.12.2021

Company Code 1035

Plant A9C1

Reference

Doc.Header Text

1

2

3

1. Posting Date

2. **Company Code** Enter Company Code of Material

3. Plant

Press ENTER to next process

Debit/Credit Material: Overview Screen

Display Document



Posting Date 10.12.2021

Company Code 1035 BETAGRO (CAMBODIA)

Plant A9C1 BGC-Feed mill

Reference

Doc.Header Text

USD Co.Code THB Group USD Hard

Variant LAGERMATERIAL - OHNE BWKEY 025 St Company code currency

Material

Valuation type

P

Amount

Quantity

A210104003

S

20,000.00

4

5

4. **Material** Enter Material

5. **Amount** Enter Amount to calculate the new PuP

Please see the Example calculation Amount at the example slide

Actual Costing Material Ledger

MR22 – Material Price Change

AROUND



Debit/Credit Material: Overview Screen

Display Document 8

Posting Date: 10.12.2021

Company Code: 1035 BETAGRO (CAMBODIA)

Plant: A9C1 BGC Feed mill

Reference: 6

Doc. Header Text

Translation of Revaluation Amounts

Translate from currency type

☒ USD Company code currency 9

☐ USD Hard currency

USD Co.Code THB Group USD Hard

Variant: LAGERMATERIAL - OHNE BWKEY_025 St...

Material	Valuation type	P	Amount	Quantity	Base Unit	Price	New price	Pr
A210104003	S				KG	0.60	0.60	1

7

After input amount in Tab "**USD Co.Code**" of Step 5, Material Ledger collect 3 Currencies , Company Code, Group and Hard currency. So you need to convert the amount for Group and Hard Currency also.

6. Click Tab "**THB Group**"

7. Press the grey square to select the line

8. Press to save and convert the amount

9. System pop up option for origin currency exchange. Select "USD Company code currency" system will automatically convert the amount.

Press ENTER system will automatically convert the amount.

Repeat step 6-9 for Tab "**USD Hard**" and SAVE.

USD Co.Code THB Group USD Hard

Variant: LAGERMATERIAL - OHNE BWKEY_025 St...

Material	Valuation type	P	Amount
A210104003	S		670,000.00

USD Co.Code THB Group USD Hard

Variant: LAGERMATERIAL - OHNE BWKEY_025 St...

Material	Valuation type	P	Amount
A210104003	S		20,000.00

Actual Costing Material Ledger

MR22 – Material Price Change

AROUND



Example: Calculation of Amount to change Periodic Unit Price

$$\text{Amount} = (\text{Desired PUP} - \text{PUP before change}) \times \text{Cumulative Quantity}$$

Material Price Analysis

Material Price Analysis

Costing Cockpit Set Costing Run

Material: A210104003 มาลาสน์ 910 ไก่เนื้อแรกเกิด

Plant: A9C1 BGC-Feed mill

Valuation Type:

Sales Order Stock/Project Stock

Period/Year: 12 2021 Period Status: Relevant for:

Curr./Valuation: 10 Company code currency

Value: Actual Value Level + Lower Level Fixed +

View: PS Price Determination Structure H Main Cost Component Split

Prices

Messages Object Source Document WIP

Category	Trns Qty	ValQtyUnit	PrelimVal	PriceDiff	ExRateDiff	ActualVal.	Price	Int
Beginning Inventory	0.010 KG		0.01	0.01-	0.00	0.00	0.00	
Revaluation	0 KG		0.01-	0.01	0.00	0.00	0.00	
Receipts	100,000 KG		12,000.00	0.00	0.00	12,000.00	0.12	
Cumulative Inventory	100,000.010 KG		12,000.00	0.00	0.00	12,000.00	0.12	
Ending Inventory	100,000.010 KG		12,000.00	0.00	0.00	12,000.00	0.12	



USD Co.Code		THB Group		USD Hard	
Variant		LAGERMATERIAL - OHNE BWKEY_025 St...			Company code currency
Material	Valuation type	P	Amount	Quantity	
A210104003		S	20,000.00		

Actual Costing Material Ledger

MR22 – Material Price Change

AROUND



Example: Calculation of Amount to change Periodic Unit Price

$$\text{Amount} = (\text{Desired PUP} - \text{PUP before change}) \times \text{Cumulative Quantity}$$

Material Price Analysis – After Price change

Material Price Analysis

Costing Cockpit Set Costing Run

Material: A210104003 บาลานส์ 910 ไก่เนื้อแรกเกิด-

Plant: A9C1 BGC-Feed mill

Valuation Type:

Sales Order Stock/Project Stock

Period/Year: 12 2021 Period Status: Relevant for S:

Curr./Valuation: 10 Company code currency

Value: Actual Value Level + Lower Level Fixed + V

View: PS Price Determination Structure H Main Cost Component Split

Prices

Messages Object Source Document WIP

Category	Trns Qty	ValQtyUnit	PrelimVal	PriceDiff	ExRateDiff	ActualVal.	Price
Beginning Inventory	0.010 KG		0.01	0.01-	0.00	0.00	0.00
Revaluation	0 KG		0.01-	0.01	0.00	0.00	0.00
Receipts	100,000 KG		12,000.00	0.00	0.00	12,000.00	0.12
Other Receipts/Consumption	0 KG		0.00	20,001.00	0.00	20,001.00	0.00
Cumulative Inventory	100,000.010 KG		12,000.00	20,001.00	0.00	32,001.00	0.32
Ending Inventory	100,000.010 KG		12,000.00	0.00	0.00	12,000.00	0.12

The new PUP = 0.32

Exercise:

AROUND



- ▶ 1. Price Change for Material A110101021 Plant A9C1
 - Current PuP = _____
 - New PuP = 750
 - Amount USD Co. Code = _____
 - Amount THB Group = _____
 - Amount USD Hard = _____

- ▶ 2. Price Change for Material A110201015 Plant 9C00
 - Current PuP = _____
 - New PuP = 1
 - Amount USD Co. Code = _____
 - Amount THB Group = _____
 - Amount USD Hard = _____

Exercise:

AROUND



- ▶ 3. Price Change for Material A110401294 Plant 9C00
 - Current PuP = _____
 - New PuP = 0.5
 - Amount USD Co. Code = _____
 - Amount THB Group = _____
 - Amount USD Hard = _____

Course Outline

AROUND



Course Overview

Actual Costing Overview

Material Price Analysis

Material Price Change

Q&A

???



Q & A

